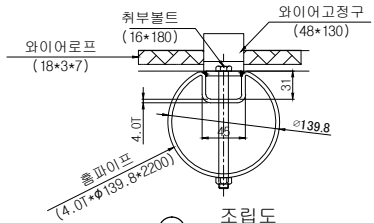
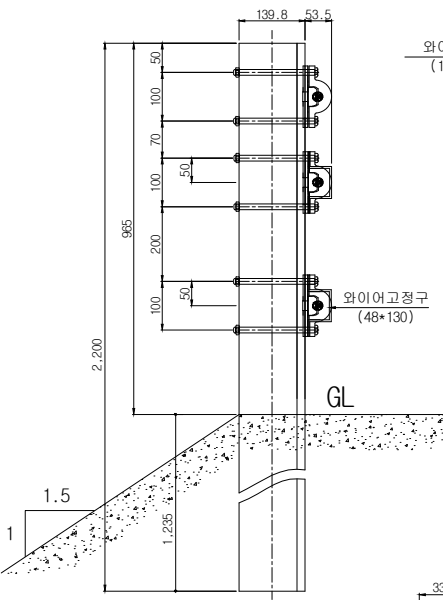
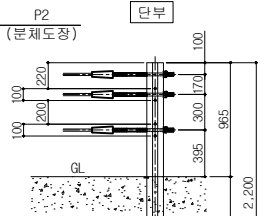
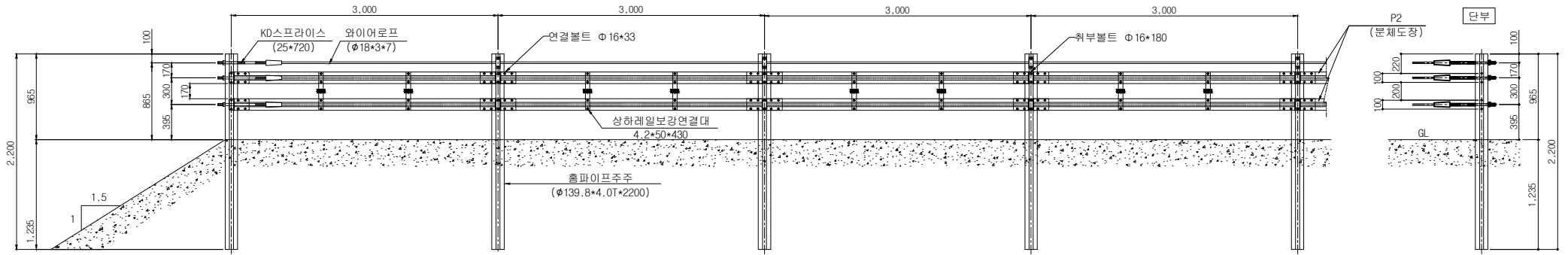
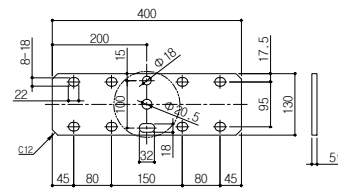


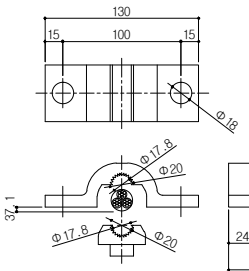
성토부 경관형 방호울타리 SB4 등급(KDGC-13-P2)
 분체도장 페인트No 12178 EX8816-L_GREEN(WT)H



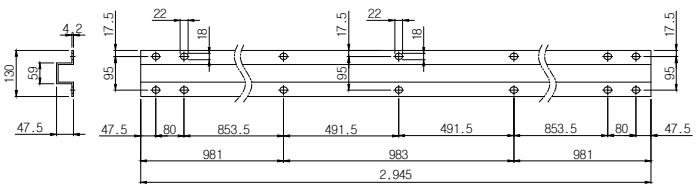
조립도
SCALE: NONE



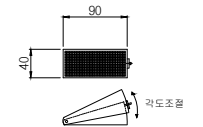
연결대
SCALE: NONE



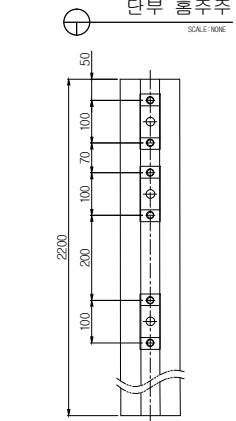
와이어고정구
SCALE: NONE



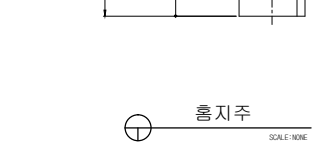
KD 절곡레일
SCALE: NONE



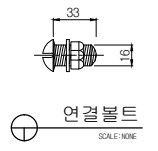
KD 반사체
SCALE: NONE



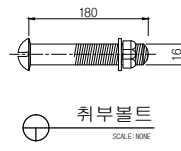
흄주주 가공도
SCALE: NONE



흄주
SCALE: NONE



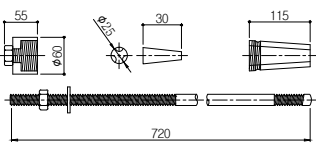
연결볼트
SCALE: NONE



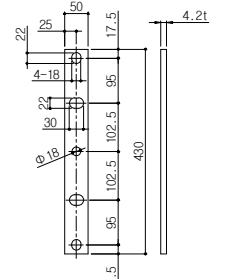
취부볼트
SCALE: NONE



와이어로프
SCALE: NONE



KD스프라이스
SCALE: NONE



상하레일보강연결대
SCALE: NONE

표준구간 (경간당) (3M/1경간)

품명	규격	단위	수량	비고
흄파이프주주	4.0T*139.8*2200	본	1	SS400
KD 절곡레일	4.2T*130*2945	장	2	SS400
와이어로프	φ18*3*7	M	9	용융아연도금/분체도장
와이어고정구	48*130	조	3	AL6061 T6
브라켓	5.0T*113*400	EA	2	SS400
취부볼트	M16*180	조	6	
연결볼트	M16*33	조	26	
상하레일보강연결대	4.2T*50*430	EA	2	SS400
주주캡	φ139.8용	EA	1	
KD 반사체	40*90	EA	2	

제품명 Drawing	성토부 경관형 방호울타리	설계 Design	-	날짜	2016.03.08	도면번호	(주)금동강건	경남 밀양시 초동면 명성리 2467번지 초동농공단지 내 TEL:(055)-391-1717, FAX:(055)-391-4600 도로안전시설물 전문 생산업체
모델명 Model	KDGC-13	제도 Drawing	-	축척	NON	KDGC-13-P2	KUMDONG	